

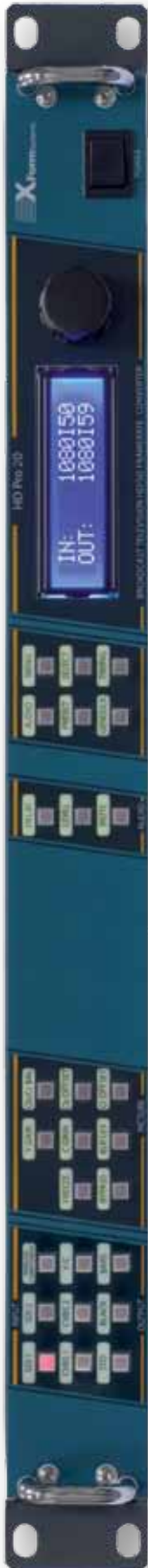
HD Pro 20

HD Framerate- Converter



HD Pro 20

HD Framerate- Converter



(local control panel not included with the base configuration)

Framerate conversion 50 / 59.94Hz for HD- and SD-signals

HD Pro 20 offers support for 720p, 1080i and SD-signals.

Frame Synchronization & Timebase Correction

A full frame TBC feature is included with adjustable and flexible system timing using the analog genlock reference inputs.

Video In-/Outputs

The unit provides two HD/SD SDI inputs and two HD/SD SDI outputs.

With option /AV, standard definition analog in- and outputs are added that support CVBS, Y/C and component video.

Color Correction

The unit provides a RGB color corrector. Black level, white level and gamma can be controlled independently.

Legalization

The unit features a RGB legalizer. Upper and lower limits can be controlled independently for each RGB color channel.

Gain, Amplitude and Color Control

The system includes a Proc Amp that gives full control of video gain, black level, hue (NTSC) and Y/C timing.

VBI and Test pattern generator

The unit features a test pattern generator and a configurable VBI-area. Test line insertion for online measurement of signal quality is supported.

Audio

The unit processes video signals as well as the associated audio data. The system supports the full set of 16 embedded audio channels and, additionally, provides the embedding / deembedding of four external analog or AES signals.

The delay of the audio channels can be adjusted independently. This is a powerful feature to deal with differences in the processing delay of video and audio and correct potential lip sync problems.

The following list of features illustrates the overall flexibility of the audio subsystem.

- support for all 4 SDI audio-groups (16 channels)
- embedding and deembedding of analog/AES audio signals, embedding also supports SPDIF
- delay adjustable from 4ms to 1023ms for each channel individually
- automatic delay correction
- level adjustable from $-\infty$ to +18 dB for each channel individually
- fully configurable routing matrix
- support for sampling rates of 32 / 44.1 / 48 kHz

Timecode (option /TC)

- timecode generation and regeneration
- accepts VITC in all VBI lines with auto detection of lines or manual line selection
- accepts SMPTE RP188 and RP196 via SDI
- accepts LTC
- supports VITC, LTC, RP188 and RP196 timecode at output

Presets

In addition to the presets provided for several groups of functions, full panel presets are also supported. They allow storing and recall of complete panel setups.

Presets can also be saved and recalled to/from a PC via the remote control software.

Remote Control

All functions can be controlled remotely.

The unit features serial (RS232) and Ethernet interfaces. A MS Windows remote control software is included.

It supports the SNMP option with the generation of traps as input or reference signal loss and various status queries.

Additionally a GPI interface is included for System Integration.

Quality

XForm Systems is proud to manufacture high quality equipment for the demanding broadcast and studio facilities markets for a long time.

Quality is paramount in our design and manufacturing facilities.

MS Windows based Remote Environment

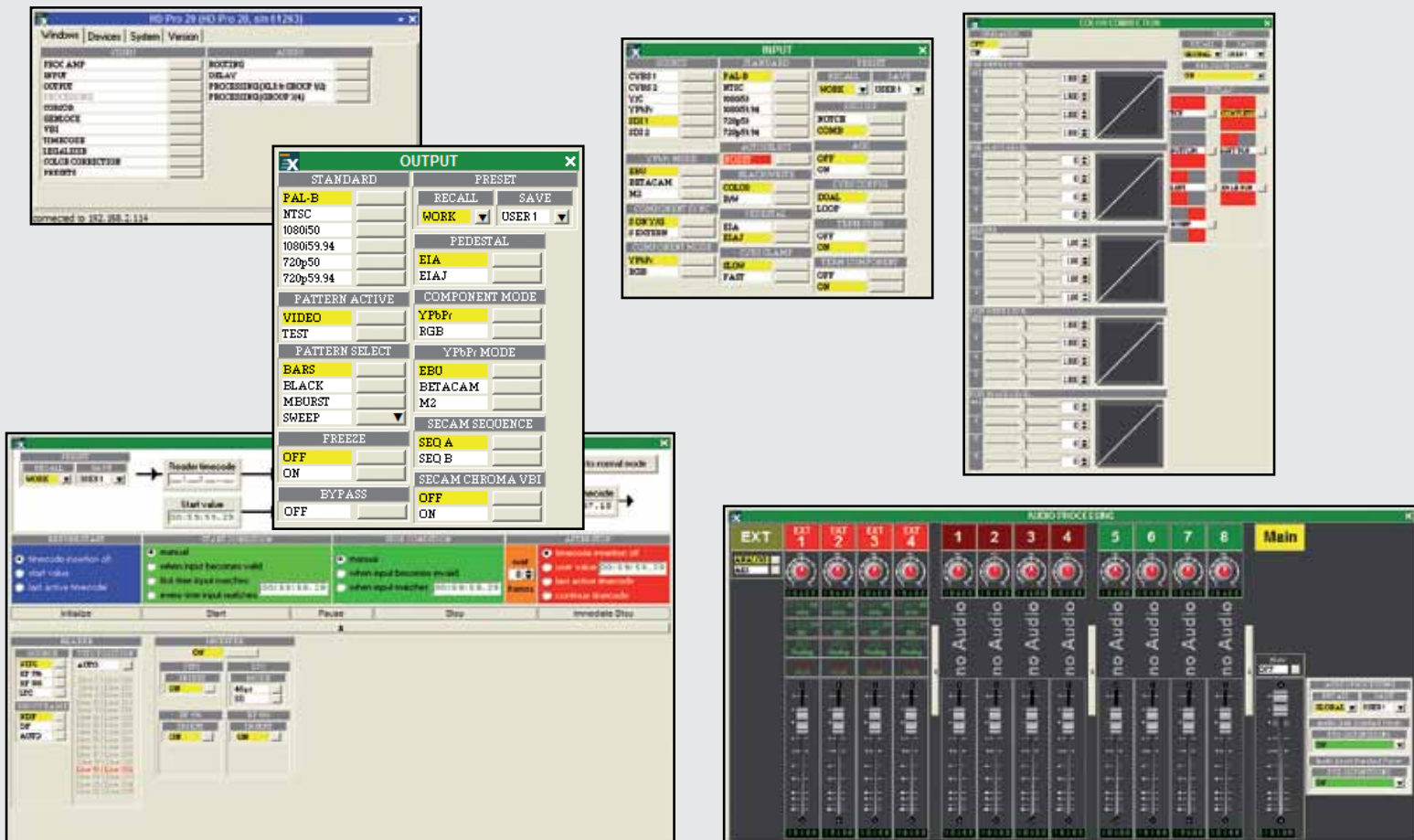
A remote control application for MS Windows based PCs is available. Every function of the unit can be controlled and monitored via the PC, especially those that are not accessible via the local control panel. A single PC can control multiple units.

The software allows to monitor the complete state of the unit in several windows, one for each group of functions, and provides a highly intuitive environment for the operation of the system.

System Requirements

A PC running MS Windows 7, MS Windows Vista, MS Windows XP or MS Windows 2000 with at least 500 MHz and 256 MByte of RAM.

The software needs 6 MB of disk space. A screen resolution of at least 1024 x 768 pixels with 64 k of colors is recommended. The communication with the unit is done via a RS232-port or Ethernet.



All Preset functions for the different groups of functions are concentrated by the Remote Environment in a single window. Presets can be named and saved to a file for documentation purposes and later recall. The timecode window allows the definition of timecode procedures with start condition, stop condition, jam sync and many other features. The input and output timecodes are monitored simultaneously in the remote or in the on screen display.

The remote environment contains a complete audio control for embedded and external audio. It supports the adjustment of level and delay for all channels independently and additionally includes a fully loaded routing matrix for flexible channel swap. The graphic control interface is especially helpful for the use of complex features as color correction, audio, etc. It assists the operator in a highly intuitive way and gives a quick and convenient overview of all parameters.

HD Pro 20

HD Framerate- Converter



Input Formats and Video Standards

HD/SD SDI Serial Digital Component , 10 Bit,
ITU BT.656 / SMPTE 259M
(270 MBit, SD 576i50, SD 480i59.94)
SMPTE 292M
(1.485 GBit, 720p25, 720p29.97, 720p30,
720p50, 720p59.94, 1080i50, 1080i59.94)

Genlock Trilevel / SD blackburst input

Input Video Connectors

HD/SD SDI 2 x BNC
Genlock 2 x BNC dual / looping input

Output Formats and Video Standards

HD/SD SDI Serial Digital Component , 10 Bit,
ITU BT.656 / SMPTE 259M
(270 MBit, SD 576i50, SD 480i59.94)
SMPTE 292M
(1.485 GBit, 720p25, 720p29.97, 720p30,
720p50, 720p59.94, 1080i50, 1080i59.94)

Output Video Connectors

HD/SD SDI 2 x BNC

Supported Conversion Formats

OUT \ IN	SD 576i50	SD 480i59.94	720p25	720p29.97	720p30	720p50	720p59.94	1080i50	1080i59.94
SD 576i50	Green	Green							
SD 480i59.94	Green	Green							
720p25			Green	Green					
720p29.97			Green	Green					
720p30			Green	Green					
720p50						Green	Green		
720p59.94						Green	Green		
1080i50								Green	Green
1080i59.94								Green	Green

Audio Processing

Audio Delay Time 4-1023ms
Audio Gain -∞ ... +18dB
Number of embedded channels: 16
Internal processing 32 Bit
channel swap via routing matrix
S/N Ratio > 90 dB
THD < 0.1%

Video Processing

Quantizing Scheme 4:2:2 conforming to
ITU BT656, SMPTE 259M / SMPTE 292M
12 Bit Processing
Full Frame TBC
Proprietary Linear Standards Conversion
RGB Legalizer
RGB Color Corrector

Remote Control

RS-232 Dsub9, 38400, 8N1
Ethernet RJ-45, 10/100BaseT
GPI Dsub15, 5 in, 4 out
Windows Control Software included

Power Requirements

AC Voltage 90-260V, 50 / 60 Hz
Power Consumption <60VA

Physical

Dimensions 44 x 483 x 367mm (H x W x D)
Weight 6 kg approx
Chassis 1RU 19" Rack mounting
Cooling Forced air – cross flow (side to side)
Temperature 0°C - 35°C (operation)
-20°C - 75°C (storage)
Humidity 10% - 90% non condensing

Option /AEB

Analog / AES Audio Embedding / Deembedding
Digital Audio AES or SPDIF 32kHz / 44.1kHz / 48kHz up
to 24 Bit
ADC/DAC Resolution 24 Bit
Analog In 4ch on one DB25 (balanced)
Digital In 4 x BNC
Analog Out 4ch on one DB25 (balanced)
Digital Out 4 x BNC

Option /AV

Input Formats and Video Standards

CVBS & Y/C PAL-B, PAL-M, PAL-N, PAL-60, NTSC,
NTSC-J, NTSC-4.43, SECAM
Sampling 27MHz, 12 Bit
YPbPr/RGB 525/625 N10, MII or Betacam, Sync on
Y/G or external, Sampling 27MHz, 12 Bit

Input Video Connectors

CVBS 2 x BNC – dual / looping input
Y/C 4 pin female S-Video connector
YPbPr/RGB 3 x BNC

Output Formats and Video Standards

CVBS & Y/C PAL-B, PAL-M, PAL-N, NTSC,
NTSC-J, NTSC-4.43, SECAM
Sampling 27MHz, 12 Bit
YPbPr/RGB 525 / 625 N10, MII or Betacam
Sync on Y/G, Sampling 27MHz, 12 Bit

Output Video Connectors

CVBS 2 x BNC
Y/C 4 pin female S-Video connector
YPbPr 3 x BNC

Option /TC

Formats supported: VITC, LTC, RP 196, RP 188
LTC In / Out BNC
LTC Format EBU or SMPTE
59.94Hz DropFrame and non-DropFrame

Option /RP

Redundant Power Supply

Option /ETS

SNMP Monitoring and Traps

Option /KBHDP20

local control panel



This document gives a general description and shall not be used as part of any contract without formal confirmation by XForm Systems GmbH. XForm Systems reserves the right to make changes without notice. All mentioned trademarks are subject to their owners.

Copyright XForm Systems GmbH 2011
Version11 04.03.2011